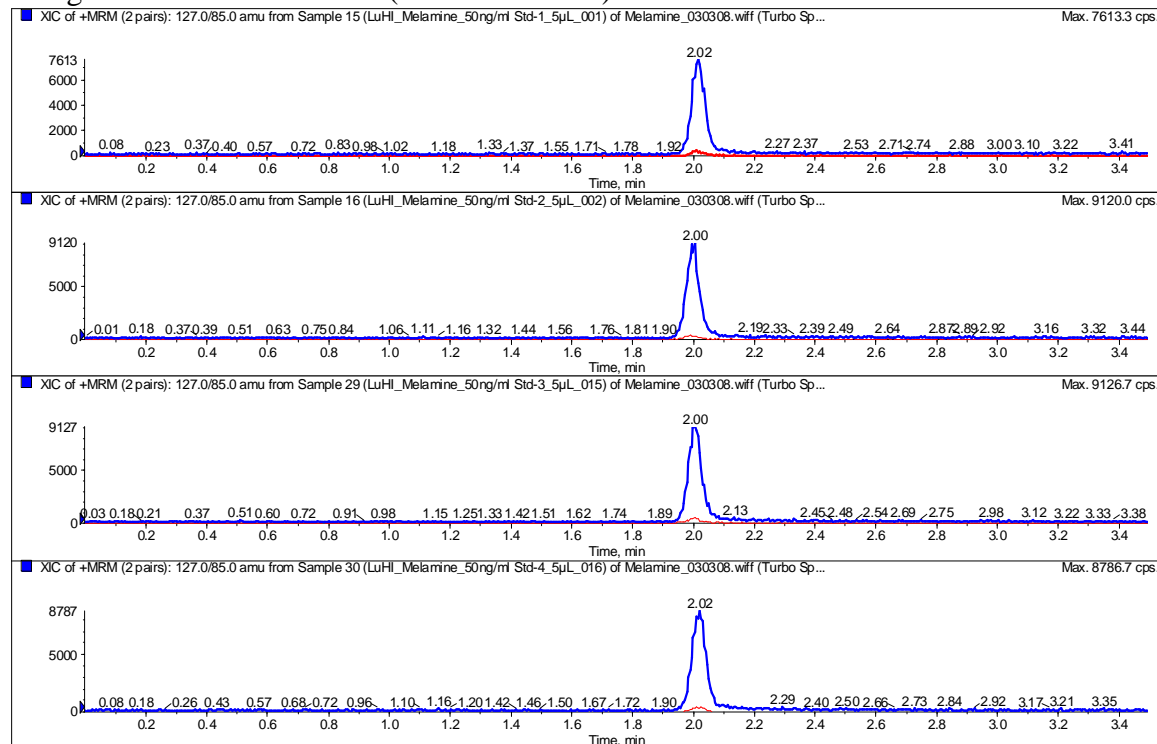


HILIC Melamine Analysis

HPLC Conditions:

Column: Luna 3 μ m HILIC, 100x2.0mm, SN# 427439-6
Flow Rate: 0.4mL/min
Mobile Phase: 90/10 ACN/100mM NH₄ formate pH 3.2
Analysis: Isocratic
Runtime: 3.5 mins
Injection Volume: 5 μ L
Temperature: Ambient
MRM: m/z 127 – 85, 127 – 60; ESI Positive Mode

50 ng/ml Melamine standard (95/5 ACN/H₂O)



10 ng/ml Melamine standard (95/5 ACN/H₂O)

